

ABS-JET
SERVICE

inkjet
technology by



ul. Paderewskiego 117
34-600 Limanowa
Poland

tel: 0048 18 3370 155
fax: 0048 18 3371 891
tel/fax: 0048 18 3372 143
infolinia: 0 800 000 431

biuro@absjet.pl
marketing@absjet.pl
serwis@absjet.pl

www.absjet.pl

Simple, Affordable & Maintenance-Free

The answer for small business printing applications

IJP
series

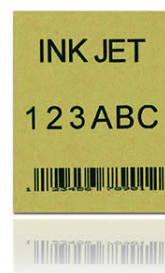
Introducing the ANSER™ IJP-600 Series High-Resolution Printer!
Small businesses need a simple yet powerful coding solution that prints everything you need and costs you less.
We hear you and now the answer is here!

Affordable

Truly stand-alone and fully integrated, the IJP-600 series deliver superior outer package printing performance at an amazing low price. No external PC required, no hardware add-ons, no extra cost!



IJP series is an economical workhorse that offers plenty of features



ANSER's QuikSwap™ cartridge ensures reliable and high quality printing with no maintenance



Maintenance Free with QuikSwap™

ANSER's ink cartridge swap design means zero-maintenance. With ANSER's QuikSwap™ cartridge, every time you change the ink cartridge, you also get a brand new printhead, which means no more maintenance down-times and dealing with servicing or technician calls.

Superb Print Quality

IJP-600 series offers you clean and superb print quality. Scalable up to 600 dpi (dot per inch), you will be able to achieve the same high resolution printing as your office printers.



SPECIFICATIONS

ACCESSORIES & OPTIONAL SOFTWARE

Controller

- Printhead Control Capability 1 Printhead
- CPU 32 Bit
- Display 160 x 80 Pixels LCD
- LED Backlit with Auto Swith-off
- LED Indicators 6 Indicators; Ink-low, Select Alphabet, IR-Input, Alarm, Print On/Off, Remote On/Off
- Hot Keys 3 Hot Keys; Alarm-off, Print On/Off, Remote On/Off
- Power Supply AC 110V ~ 240 V, 47 ~ 63 HZ, Auto-Switching
- Mounting Fixed sideway mounting
- Measurement 334 x 250 x 112 (H x W x D: mm) or 13.1 x 9.8 x 4.4 (H x W x D: inch)

Printhead

- QuickSwap™ Cartridge Built-in "Plug & Print" Hewlett-Packard print engine cartridge
- Print Directions Horizontal (standard) and down (Optional for 370 cc bulk ink system)
- Special Features Anti-shock mechanism design
Built-in capping station
- Mounting Fixed sideway mounting
- Distance to Print Surface Not greater than 6mm (0.25")
- Print Speed (Conveyor) Max. 150 meters (491 feet)/Min.
- Character Height 1-Line 12.7 mm (0.5")

Operation

- Input Device Pocket-Size IR remote keypad
Remote distance up 8 meters (26 feet)
Features PC keyboard (PS2) interface
- Operation Menu Digital menu driven (DMD) for quick and easy operation
- Language Selection English, French, Japanese, Korean, Spanish, Swedish, Simple Chinese, Traditional Chinese. (One only)
- Printable Images Alphabets, Numeric and logos; including date code, Time code, Expiration date, Shift code, Counter, Lot - box code
- Message Max. 120 characters/line
Max. 200 messages stored

Ink System

- Ink Volume and Colors 42 cc compact print cartridge, colors; Black, Red, Blue, Green and Yellow
370 cc Bulk Ink System (Black)

Environment Limit

- Operating Conditions Any normal, non-condensing or harsh environment with a temperature range of 5 °C ~ 40 °C (41 °F ~ 104 °F)

Warranty

- All Equipment 12 months (Not including consumable parts)
- All Labor 90 days

Accessories

1. Encoder Kit: (P/N: 7003002014)

The shaft encoder is an electro-mechanical device used to convert the angular position of a shaft or axle to an analog or digital code, sending the conveyor speed information to the IJP controller.



2. Down-Side Printing Kit: (P/N: 7003002015)

Ink-Level position plate for 370cc Bulk Ink System



3. IJP External Alarm Module 110V/220V (P/N: 7003002018/7003002019)



4. PC-to-ANSER RS-232 Cable (P/N: 7003002020)



Optional Software

1. Logo kit: (P/N: 7003002016)

This software can convert any text to a logo file so you can download from your PC to the IJP controller.

2. Barcode Kit: (P/N: 7003010001)

The IJP series printer (IJP 630 & 930) can print barcodes by installing this software, including; UPC-A, UPC-E, EAN-8, EAN-13, INTERLEAVED 2 OF 5, CODE BAR, CODE -39, CODE -128, SCC-14 and SSCC-18.

3. Backup & Restore Kit: (P/N: 7003010002)

Backup & restore all of the messages, logos and parameters of the printer.

IJP Models & Options

Options \ Models	610	620	630	640	930
42 cc Ink Cartridge	✓	✓	✓	✓	✓
370 cc Bulk Ink System	X	✓	✓	✓	✓
Add Encoder Kit	X	X	✓	✓	✓
Add Barcode Kit	X	X	✓	✓	✓
Down-side Printing Kit	X	✓	✓	✓	✓
Download Logo Kit	✓	✓	✓	✓	✓
SureFlow	X	✓	✓	✓	✓
FASCU	✓	✓	✓	✓	✓
Print Range (Height)	12.7mm	12.7mm	12.7mm	6 & 12.7mm	2 ~ 12.7mm